

Course and distance
From W.O. till river
and up the same.

East — 9.6 W.O.

S. 68 E. 15. Bo.

S. 50 E. 17 1/2 Hickry.

S. 67 E. 30. Locust.

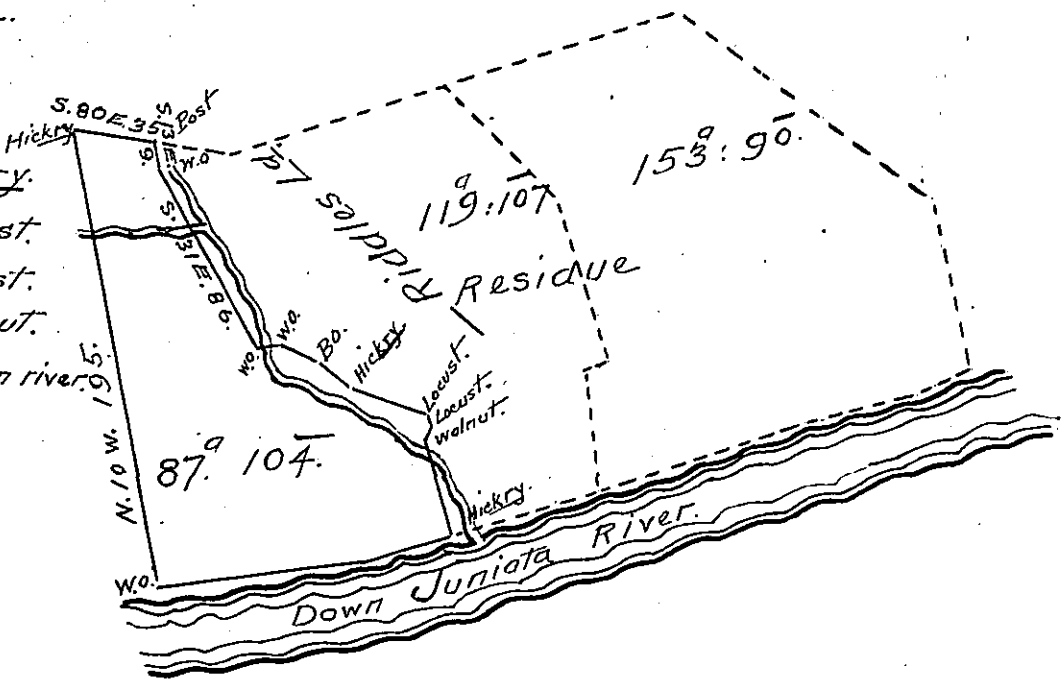
S. 37 E. 5 1/2 Locust.

S. 34 W. 5 1/2 Walnut.

S. 16 1/2 E. 42 Hickry on river.

S. 74 W. 37.

S. 80 W 89 1/2 W.O.



Draught of Eighty seven Acres and one hundred and four Perches of Land situate in Fermagh Township in Mifflin (Formerly Cumberland) County part of a tract said to contain 323^a but now appears to contain 360^a 141⁺ appears to have been surveyed 9 May 1761 By virtue of a Warrant ~~dated~~ dated 3rd Feb^y 1755, to John Lycans resurveyed the above part and divided the 4th Jan^y 1793 as appears by official paper remaining in my office examined 27th Aug 1822.

To Samuel Cochran Esquire } Wm. McAlister D.S.
Surveyor General of Pennsylvania }

IN TESTIMONY that the above is a copy of the original remaining on file in the Department of Internal Affairs of Pennsylvania, made conformably to an Act of Assembly approved the 16th day of February, 1833, I have hereunto set my Hand and caused the Seal of said Department to be affixed at Harrisburg, this Twenty ninth day of September 1905.

Loac R. Brown
Secretary of Internal Affairs.